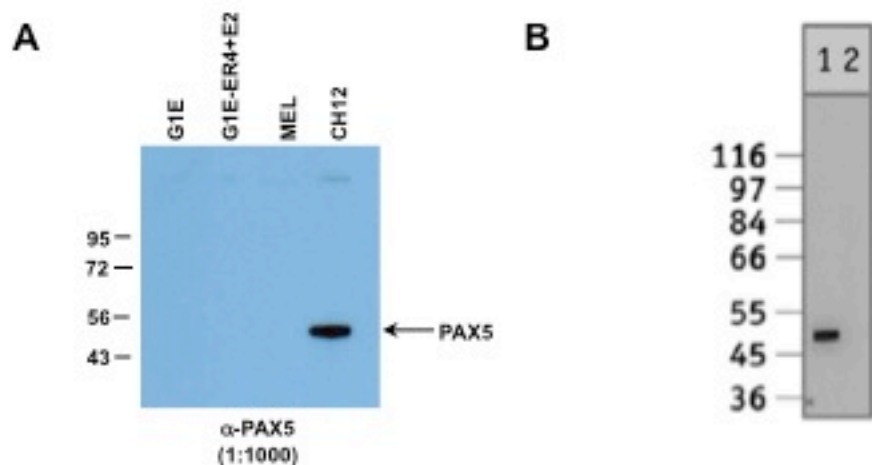


Hardison Lab @ Penn State University
PAX5 (GeneID 18507) antibody validation



PAX5 antibody: Abcam anti-PAX5 Cat# ab12000, Lot# 853694.

Validation of PAX5 antibody.

A. Western blot analysis of PAX5 expression in various mouse cell lines.

Whole cell extracts prepared from G1E, G1E-ER4+E2, MEL, and CH12 cells were separated by SDS-PAGE and transferred to PVDF using standard immunoblotting methods. PAX5 expression was detected using rabbit anti-PAX5 (ab12000, 1:1000) followed by incubation with anti-rabbit secondary antibody (1:5000) and detected by ECL Plus (Amersham Biosciences). As expected, a single major protein band was detected in B-cell lymphoma cell line, CH12, but was absent in erythroid cell lines.

B. Western blot image from Abcam datasheet for Anti-PAX5, Cat #ab12000.

Detection of PAX5 by Western blot analysis. PAX5 is detected in nuclear extracts derived from the Raji cell line using PAX5 rabbit polyclonal antibody at a 1/1000 dilution. This signal is diminished (lane 2) when the reaction mixture is incubated with PAX5 immunizing peptide.