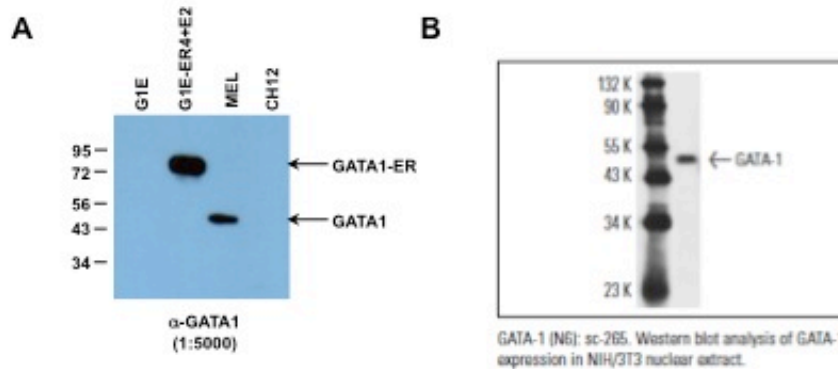


Hardison Lab @ Penn State University
GATA1 (GeneID 14460) antibody validation



GATA1 antibody: Santa Cruz Biotechnology, Inc., GATA1 (N6), Cat# sc-265.

Validation of GATA1 antibody.

A. Western blot analysis of GATA1 expression in various mouse cell lines.

Whole cell extracts prepared from G1E, G1E-ER4+E2, MEL, and CH12 cells were separated by SDS-PAGE and transferred to PVDF using standard immunoblotting methods. GATA1 expression was detected using rat anti-GATA1 (N6; sc-265, 1:5000) followed by incubation with anti-rat secondary antibody (1:5000) and detected by ECL Plus (Amersham Biosciences). Consistent with data published by Santa Cruz Biotechnology, Inc., a single protein band is detected in MEL cells. Note that the GATA1 antibody also detects GATA1-ER fusion protein present in G1E-ER4+E2 cells.

B. Western blot image from Santa Cruz Biotechnology datasheet for GATA1 (N6): sc-265.