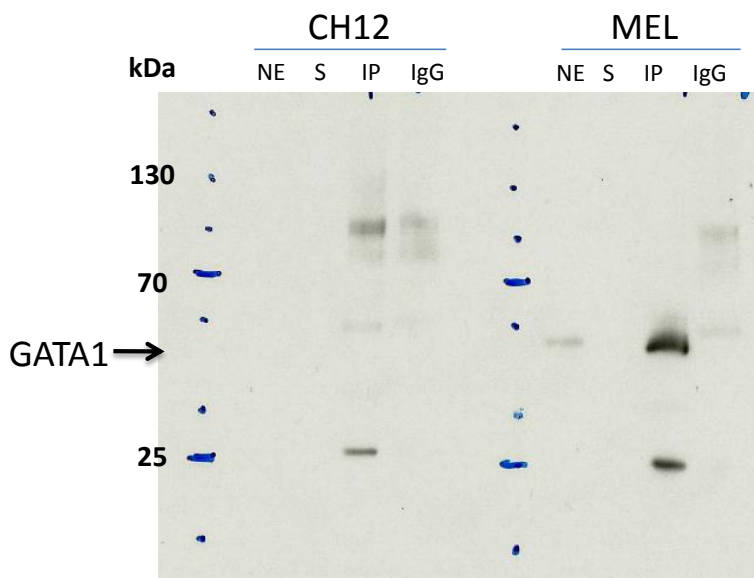


Antibody: GATA-1 Source: Santa Cruz Biotech sc-266x

Epitope: rat monoclonal IgG_{2a}, raised against bacterially expressed murine GATA-1

Validation 1: Immunoprecipitation (IP) in both CH12 and MEL cell lines



Arrow indicates immunoprecipitated band of expected size of GATA-1 in both CH12 and MEL cell lines (~43 kDa). We used DMP crosslinker to reduce antibody band interference.

NE: nuclear extract
S: supernatant after IP
IP: IP with tested antibody
IgG: IP with control IgG

Note: No detectable GATA-1 in CH12 cell which is consistent with RNA-Seq results