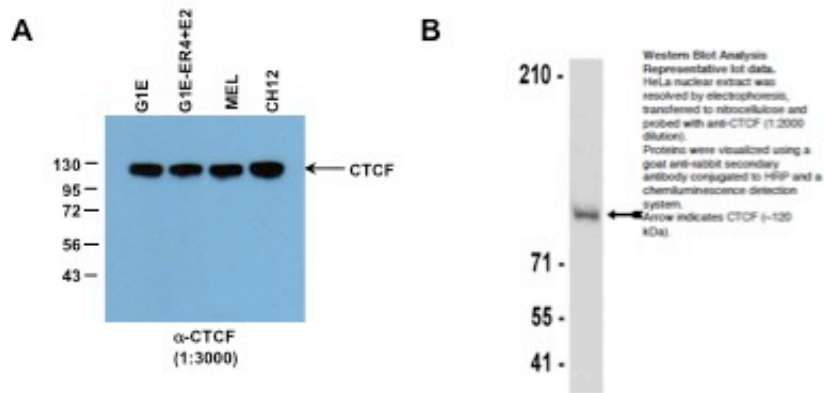


Hardison Lab @ Penn State University  
CTCF (GeneID 13018) antibody validation



CTCF antibody: Millipore Anti-CTCF Cat# 07-729, Lot# DAM1564576.

**Validation of CTCF antibody.**

**A. Western blot analysis of CTCF expression in various mouse cell lines.**

Whole cell extracts prepared from G1E, G1E-ER4+E2, MEL, and CH12 cells were separated by SDS-PAGE and transferred to PVDF using standard immunoblotting methods. CTCF expression was detected using rabbit anti-CTCF (07-729, 1:3000) followed by incubation with anti-rabbit secondary antibody (1:5000) and detected by ECL Plus (Amersham Biosciences). Consistent with data published by Millipore, a single major protein band was detected in all cell lines tested.

**B. Western blot image from Millipore datasheet for Anti-CTCF, Cat #07-729, Lot# DMA1564576.**