

ENCODE DCC Antibody Validation Document

Date of Submission

Name:

Email:

Lab

Antibody Name:

Target:

Company/
Source:

Catalog Number, database ID, laboratory

Lot Number

Antibody
Description:

Target
Description:

Species Target

Species Host

Validation Method #1

Validation Method #2

Purification
Method

Polyclonal/
Monoclonal

Vendor URL:

Reference (PI/
Publication
Information)

Please complete the following for antibodies to histone modifications:
*if your specifications are not listed in the drop-down box,
please write-in the appropriate information*

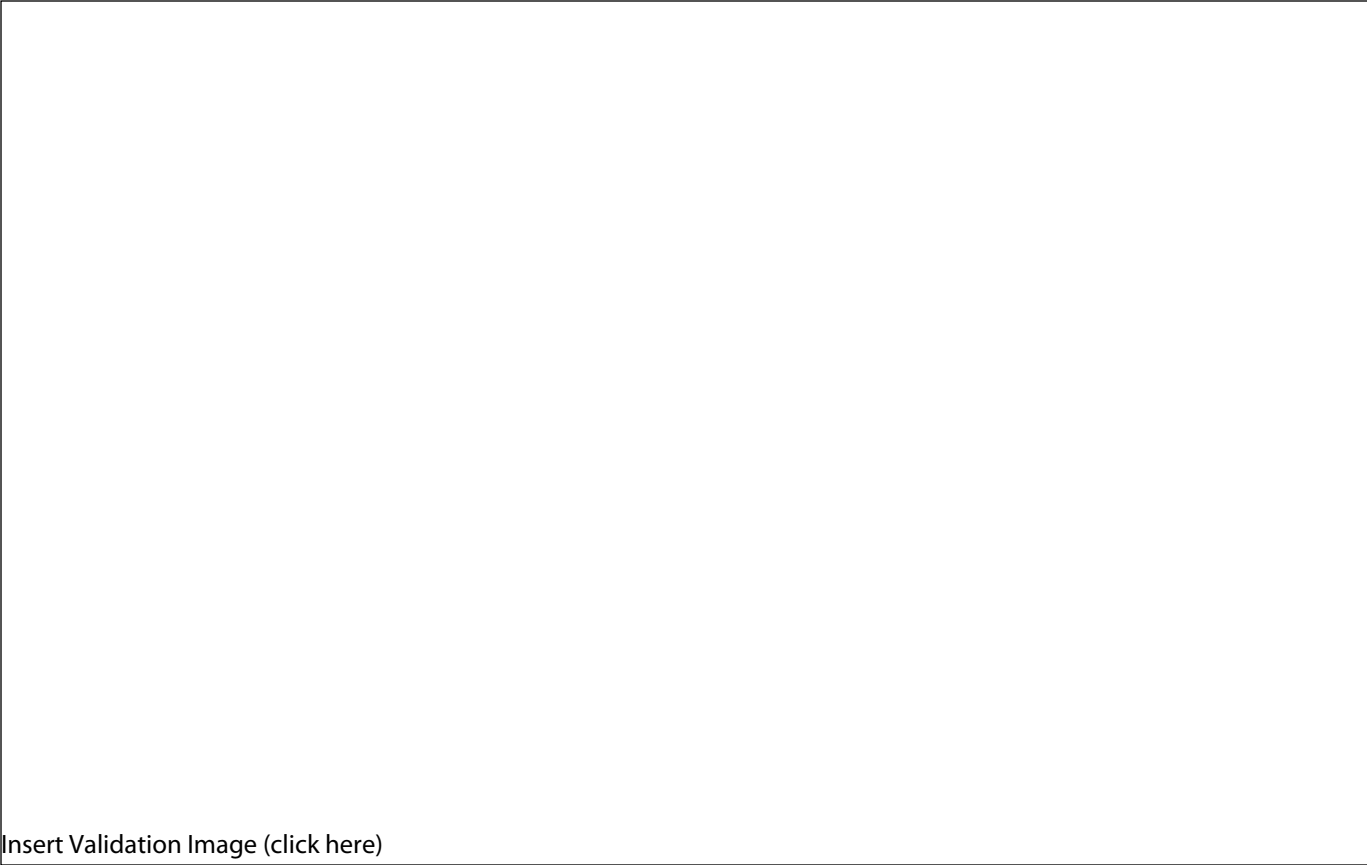
Histone Name

AA modified

AA Position

Modification

Validation #1
Analysis

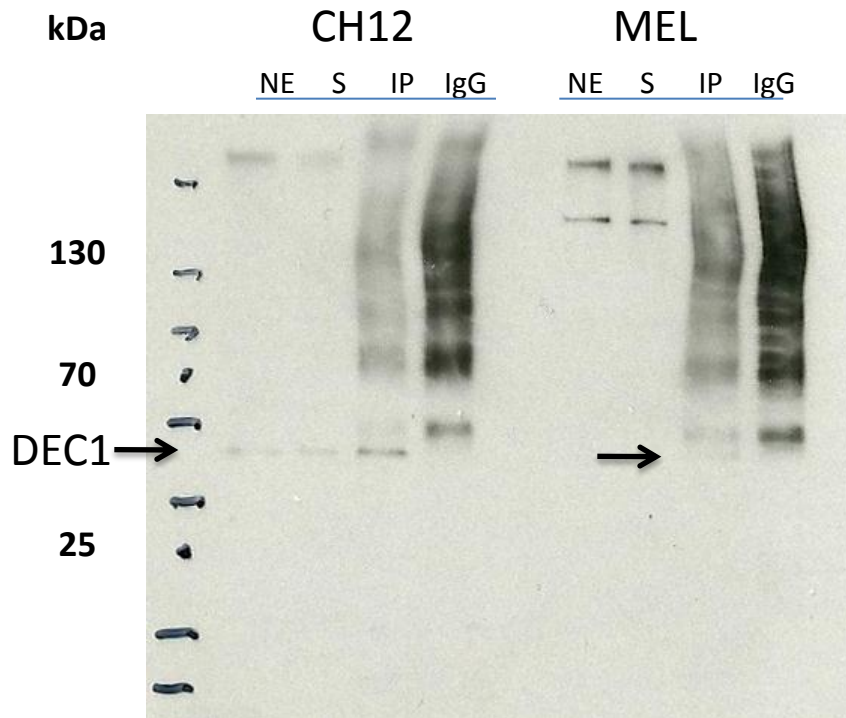


Insert Validation Image (click here)

Antibody: BHLHE40 **Source:** Novus Biologicals NB100-1800

Epitope: BHLHE40 antibody (H-75) is a rabbit polyclonal IgG, epitope maps to a region between residues 350 and the C-terminus (residue 412) of human BHLHE40

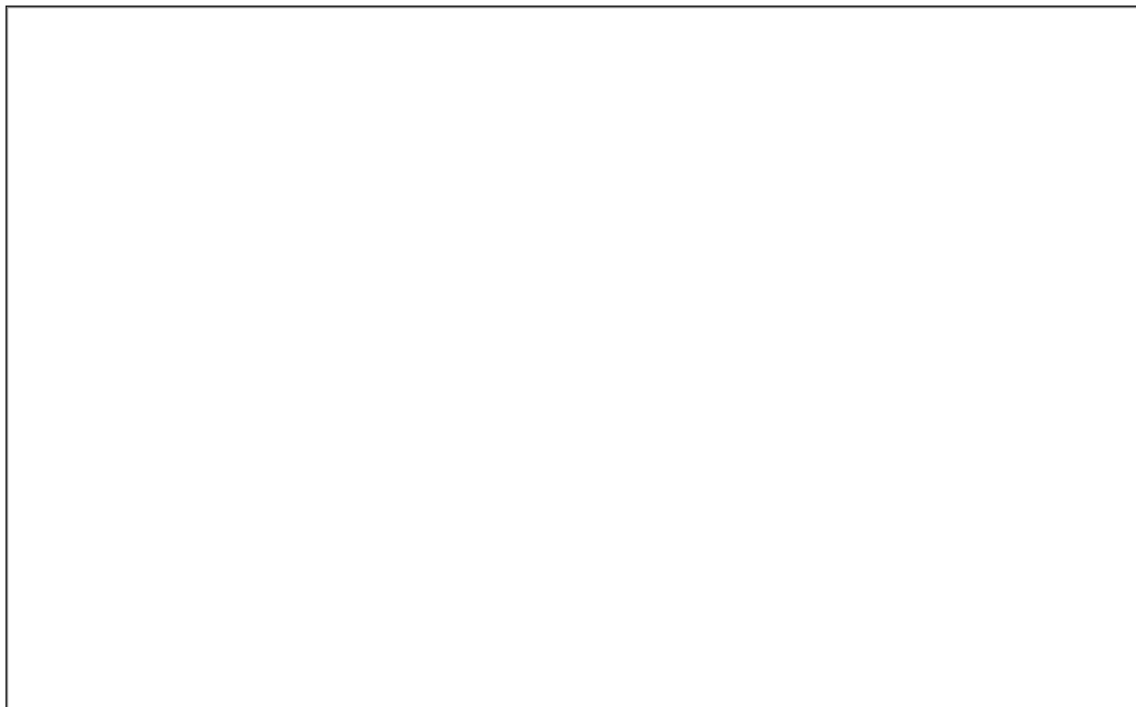
Validation 1: Immunoprecipitation (IP) in both CH12 and MEL cell lines



Arrow indicates immunoprecipitated band of expected size of : BHLHE40 in both CH12 and MEL cell lines (~50 kDa).

NE: nuclear extract
S: supernatant after IP
IP: IP with tested antibody
IgG: IP with control IgG

Validation #2
Analysis



Insert Validation Image (Click here)

