

ENCODE DCC Antibody Validation Document

Date of Submission

Name:

Email:

Lab

Antibody Name:

Target:

Company/
Source:

Catalog Number, database ID, laboratory

Lot Number

Antibody
Description:

Target
Description:

Species Target

Species Host

Validation Method #1

Validation Method #2

Purification
Method

Polyclonal/
Monoclonal

Vendor URL:

Reference (PI/
Publication
Information)

Please complete the following for antibodies to histone modifications:
*if your specifications are not listed in the drop-down box,
please write-in the appropriate information*

Histone Name

AA modified

AA Position

Modification

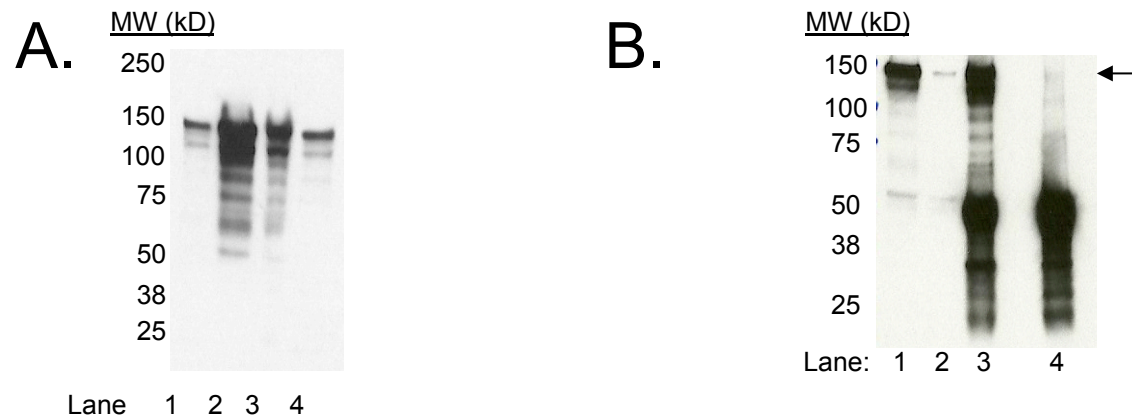
Validation #1
Analysis



Insert Validation Image (click here)

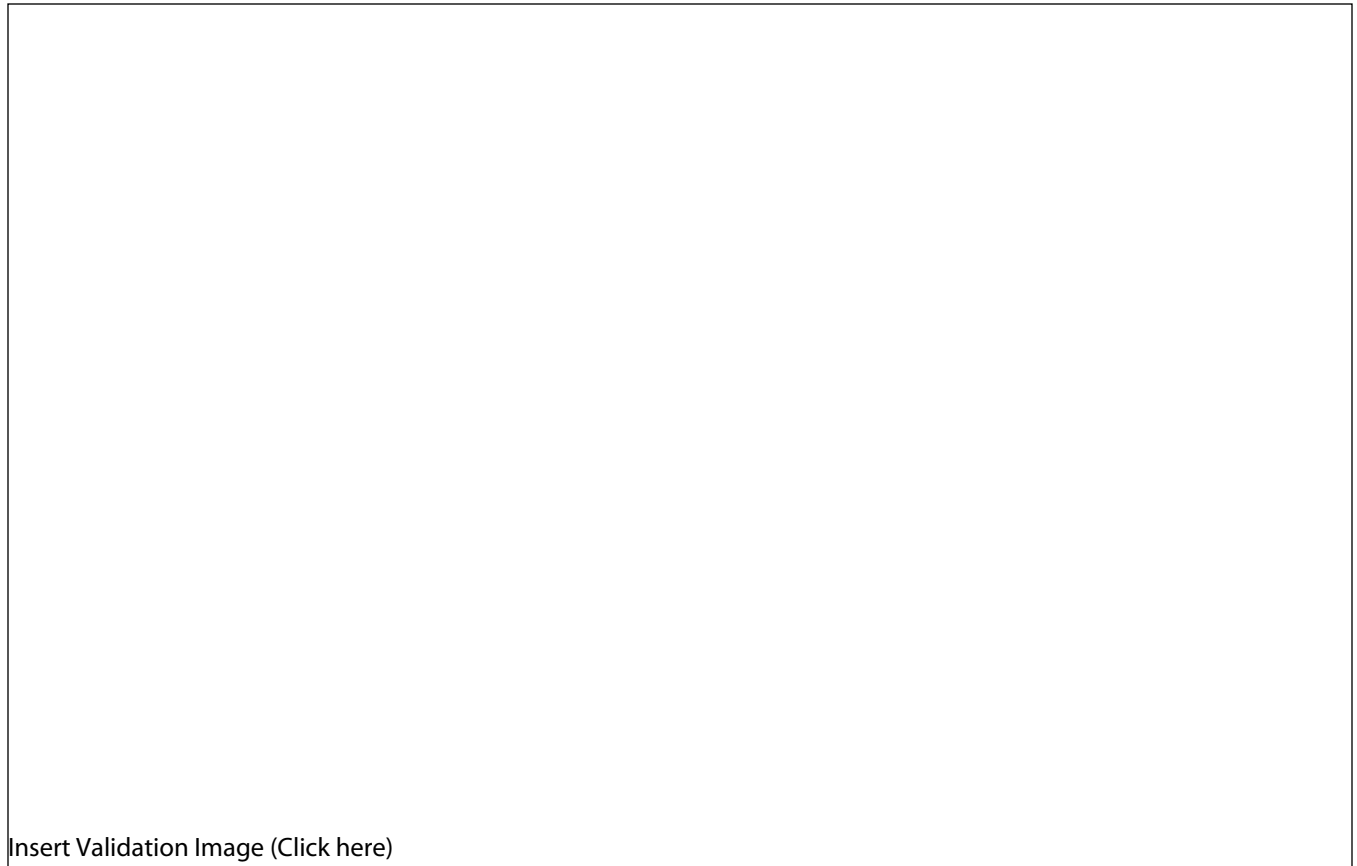


NB600-1263 (SIN3A) Immunoblot/immunoprecipitation



A. Western blot using antibody NB600-1263. Lanes contain nuclear lysates from GM12878 cells (Lane 1), K562 cells (Lane 2), HeLa S3 cells (Lane 3), and HepG2 cells (Lane 4). **B.** Immunoprecipitation of SIN3A from K562 cells using NB600-1263. Lane 1: input nuclear lysate, Lane 2: unbound material from immunoprecipitation with NB600-1263, Lane 3: material immunoprecipitated with NB600-1263, Lane 4: material immunoprecipitated using control IgG. Arrow indicates specifically immunoprecipitated band.

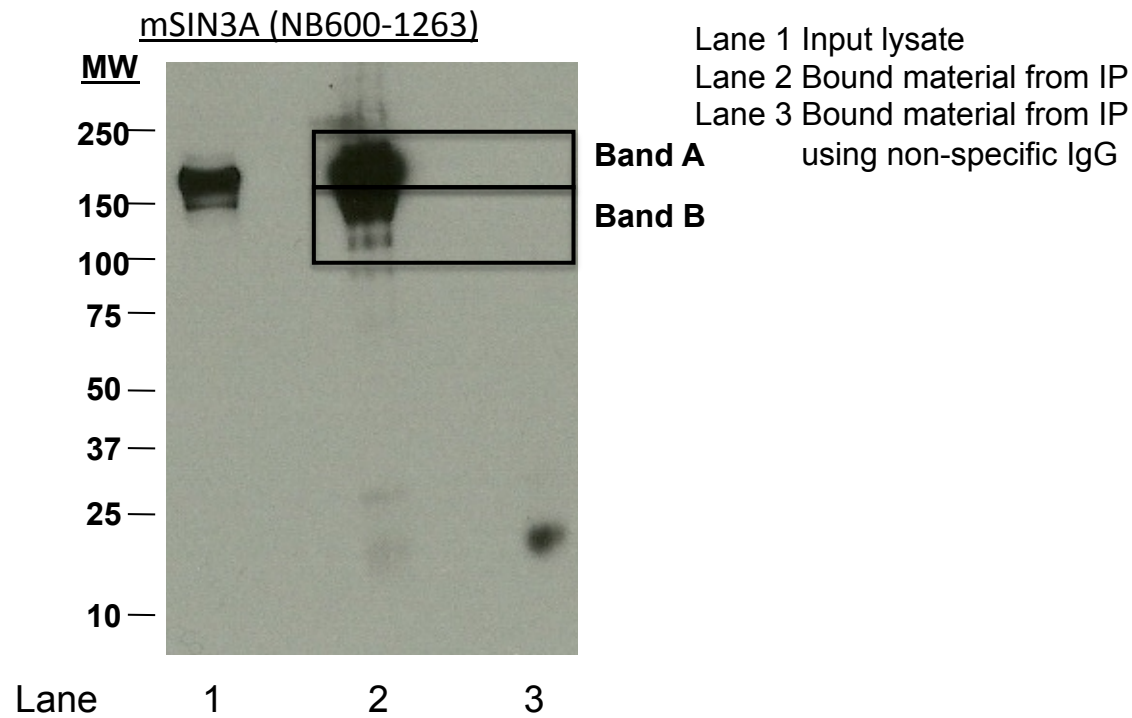
Validation #2
Analysis



Insert Validation Image (Click here)

NB600-1263 (SIN3A)

Immunoprecipitation/ Mass spectrometry



Spectrum	Name of Protein	Peptide count	Ratio(Sin3A/IgG control)
Sin3A_Band A	Paired amphipathic helix protein Sin3a	122	NOT IN CONTROL IP
Sin3A_Band A	Isoform I of AT-rich interactive domain-containing protein 4A	42	NOT IN CONTROL IP
Sin3A_Band A	Isoform 1 of AT-rich interactive domain-containing protein 4B	38	NOT IN CONTROL IP
Sin3A_Band A	Isoform 2 of DNA topoisomerase 2-alpha	34	3.4
Sin3A_Band A	Isoform 1 of Histone deacetylase complex subunit SAP130	23	NOT IN CONTROL IP
Sin3A_Band A	ATP-dependent RNA helicase A	20	3.333333333
Sin3A_Band A	Isoform Beta-1 of DNA topoisomerase 2-beta	15	2.5
Sin3A_Band A	Matrin-3	7	NOT IN CONTROL IP
Sin3A_Band A	Splicing factor 3B subunit 1	6	3
Sin3A_Band A	cDNA FLJ59523, highly similar to Scaffold attachment factor B	4	2
Sin3A_Band A	Scaffold attachment factor B2	4	1.333333333
Sin3A_Band A	116 kDa U5 small nuclear ribonucleoprotein component isoform b	3	NOT IN CONTROL IP
Sin3A_Band A	cDNA FLJ61347, highly similar to General transcription factor II-I	3	NOT IN CONTROL IP
Sin3A_Band A	FACT complex subunit SPT16	3	0.6
Sin3A_Band A	SWI/SNF-related matrix-associated actin-dependent regulator of chromatin subfamily A member 5	3	0.75
Sin3A_Band A	apoptotic chromatin condensation inducer in the nucleus isoform 3	2	NOT IN CONTROL IP
Sin3A_Band A	Centromere protein C 1	2	NOT IN CONTROL IP
Sin3A_Band A	Isoform 1 of U5 small nuclear ribonucleoprotein 200 kDa helicase	2	2
Sin3A_Band A	Isoform 2 of Cell division cycle and apoptosis regulator protein 1	2	NOT IN CONTROL IP
Sin3A_Band A	N-acetyltransferase 10 isoform b	2	NOT IN CONTROL IP
Sin3A_Band A	Putative uncharacterized protein NUP160	2	NOT IN CONTROL IP
Sin3A_Band B	Paired amphipathic helix protein Sin3a	48	NOT IN CONTROL IP

Sin3A_Band B	Isoform 1 of AT-rich interactive domain-containing protein 4B	15	NOT IN CONTROL IP
Sin3A_Band B	Isoform 1 of AT-rich interactive domain-containing protein 4A	15	NOT IN CONTROL IP
Sin3A_Band B	Isoform 2 of Heterogeneous nuclear ribonucleoprotein M	11	1.571428571
Sin3A_Band B	Transducin beta-like protein 3	11	0.733333333
Sin3A_Band B	ATP-dependent RNA helicase A	9	1.125
Sin3A_Band B	X-ray repair cross-complementing protein 5	8	2
Sin3A_Band B	Isoform 1 of Histone deacetylase complex subunit SAP130	7	NOT IN CONTROL IP
Sin3A_Band B	Isoform 1 of Nucleolar RNA helicase 2	7	0.538461538
Sin3A_Band B	NOP2 protein	7	0.777777778
Sin3A_Band B	Putative pre-mRNA-splicing factor ATP-dependent RNA helicase DHX15	6	0.857142857
Sin3A_Band B	WD repeat-containing protein 3	6	1
Sin3A_Band B	cDNA FLJ59435, highly similar to Homo sapiens outer dense fiber of sperm tails 2 (ODF2), transcript variant 2, mRNA	5	NOT IN CONTROL IP
Sin3A_Band B	Isoform 1 of Interleukin enhancer-binding factor 3	5	0.625
Sin3A_Band B	Seipin	5	1.25
Sin3A_Band B	WD repeat-containing protein 43	5	2.5
Sin3A_Band B	Deoxynucleotidyltransferase terminal-interacting protein 2	4	0.8
Sin3A_Band B	Isoform 1 of Heterogeneous nuclear ribonucleoprotein R	4	1.333333333
Sin3A_Band B	Matrin-3	4	0.444444444
Sin3A_Band B	U3 small nucleolar RNA-associated protein 14 homolog A isoform 2	4	0.5
Sin3A_Band B	ATP-dependent RNA helicase DDX18	3	0.428571429
Sin3A_Band B	Heat shock protein HSP 90-beta	3	0.5
Sin3A_Band B	Isoform 2 of Cell division cycle and apoptosis regulator protein 1	3	NOT IN CONTROL IP
Sin3A_Band B	Isoform 2 of Protein LAS1 homolog	3	0.75
Sin3A_Band B	Isoform A of Lamin-A/C	3	0.230769231
Sin3A_Band B	Nucleolar protein 11	3	0.75

Sin3A_Band B	Ribosomal RNA upstream binding transcription factor (Fragment)	3	1.5
Sin3A_Band B	RNA-binding protein 28 isoform 2	3	0.428571429
Sin3A_Band B	testis-expressed sequence 10 protein isoform 2	3	0.75
Sin3A_Band B	WD repeat-containing protein 36	3	0.75
Sin3A_Band B	Complement protein C4B frameshift mutant (Fragment)	2	1
Sin3A_Band B	FACT complex subunit SSRP1	2	1
Sin3A_Band B	Histone deacetylase 1	2	NOT IN CONTROL IP
Sin3A_Band B	Isoform 1 of Heat shock protein HSP 90-alpha	2	0.4
Sin3A_Band B	Isoform 1 of Splicing factor 3B subunit 3	2	0.222222222
Sin3A_Band B	Isoform 2 of DNA topoisomerase 2-alpha	2	0.2
Sin3A_Band B	Isoform 2 of Transcription intermediary factor 1-beta	2	NOT IN CONTROL IP
Sin3A_Band B	Isoform 3 of Nuclear valosin-containing protein-like	2	2
Sin3A_Band B	Isoform Long of Splicing factor, proline- and glutamine-rich	2	0.666666667
Sin3A_Band B	Periodic tryptophan protein 2 homolog	2	0.5
Sin3A_Band B	Probable ATP-dependent RNA helicase DDX10	2	1
Sin3A_Band B	Protein AATF	2	2
Sin3A_Band B	Ribosome biogenesis protein BOP1	2	0.666666667