

ENCODE DCC Antibody Validation Document

Date of Submission

Name:

Email:

Lab

Antibody Name:

Target:

Company/
Source:

Catalog Number, database ID, laboratory

Lot Number

Antibody
Description:

Polyclonal antibody raised in rabbit against histone H3 containing the monomethylated lysine 4 (H3K4me1), using a KLH-conjugated synthetic peptide.

Target
Description:

Histones are the main constituents of the protein part of chromosomes of eukaryotic cells. They are rich in the amino acids arginine and lysine and have been greatly conserved during evolution. Histone tails undergo numerous posttranslational modifications. This antibodies recognizes histone H3 monomethylated on lysine 4.

Species Target

Species Host

Validation Method #1

Validation Method #2

Purification
Method

Polyclonal/
Monoclonal

Vendor URL:

Reference (PI/
Publication
Information)

Please complete the following for antibodies to histone modifications:
if your specifications are not listed in the drop-down box,
please write-in the appropriate information

Histone Name

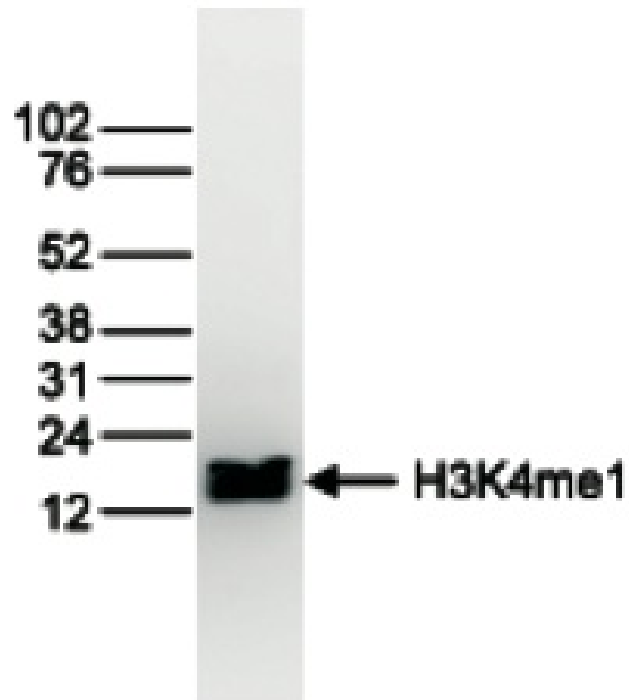
AA modified

AA Position

Modification

Validation #1
Analysis

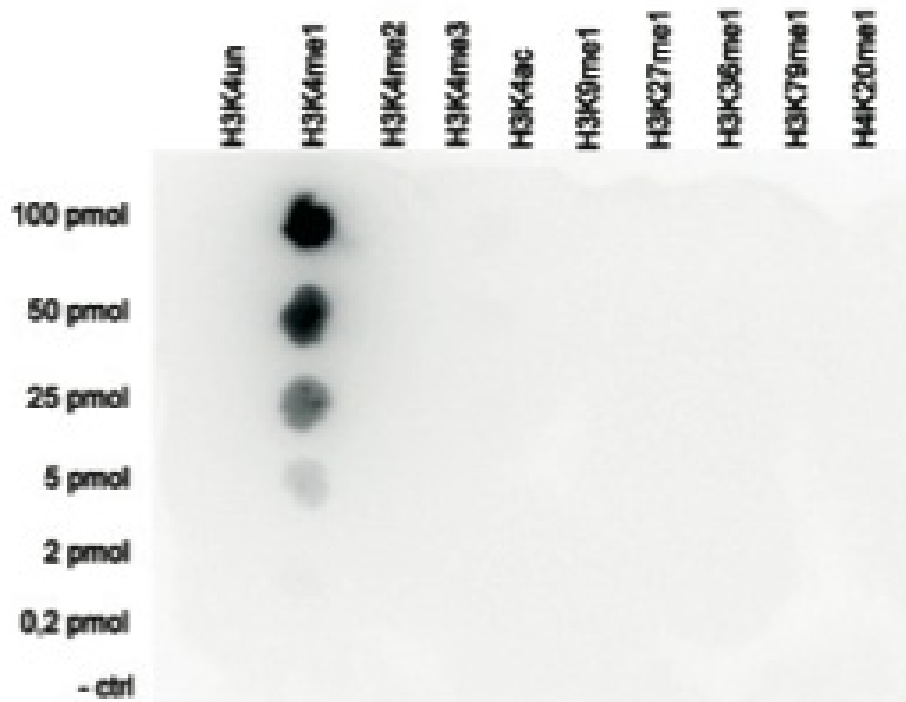
Western blot analysis using the Diagenode antibody directed against H3K4me1 Histone extracts of HeLa cells (15 μ g) were analysed by Western blot using the Diagenode antibody directed against H3K4me1 (cat# pAb-037-050) diluted 1:1,000 in TBS-Tween containing 5% skimmed milk (lane 1). The position of the protein of interest is indicated on the right; the marker (in kDa) is shown on the left.



Insert Validation Image (click here)

Validation #2
Analysis

Cross reactivity tests using the Diagenode antibody directed against H3K4me1. A Dot Blot analysis was performed to test the cross reactivity of the Diagenode antibody against H3K4me1 (cat# pAb-037-050) with peptides containing other modifications or unmodified sequences of histone H3. One hundred to 0.2 pmol of the respective peptides were spotted on a membrane. The antibody was used at a dilution of 1:20,000. Figure 2 shows a high specificity of the antibody for the modification of interest.



Insert Validation Image (Click here)

Submit by Email