

Dot blot validation of antibodies
used in the ENCODE project:

Broad Institute ChIP-Seq Group

Michael Coyne, Xiaolan Zhang,
Chuck Epstein, Brad Bernstein

Protocol

- Dot Blot Fabrication:
 - Suitably modified peptides modeled on histone tails were obtained from Abcam.
 - Each peptide is added to Bio-Dot apparatus at 0.01 and 0.1 ug / 50uL total volume (BioRad)
 - Let sit on rocker 60 minutes.
 - Pull through with vacuum, wash once with 100uL TBS and twice with 200uL TBSTw.
 - Remove membrane from Bio-Dot and transfer to 10mL Pierce SuperBlock in tray.
 - Place on rocker for 30 minutes.
 - Dump off SuperBlock.
- Antibody hybridization and imaging:
 - Add Primary Antibody in 10mL total volume.
 - Place on rocker for 30 minutes.
 - Wash 3 x 5 minutes in TBSTw.
 - Add secondary antibody diluted in SuperBlock in 10mL total volume.
 - Place on rocker for 30 minutes.
 - Wash 3 x 15 minutes in TBSTw, 1 x 10 minutes in TBS.
 - Image using ECL and a FluorChem Peltier-cooled camera (Cell Biosciences)

Antibody: Rabbit Polyclonal to Trimethyl-Histone H3 (Lys27)

Vendor: Millipore

Immunogen: KLH-conjugated, synthetic 2X-branched peptide containing the sequence ...AR(me3K)SAP... in which me3K corresponds to trimethyl-lysine at residue 27 of human histone H3.

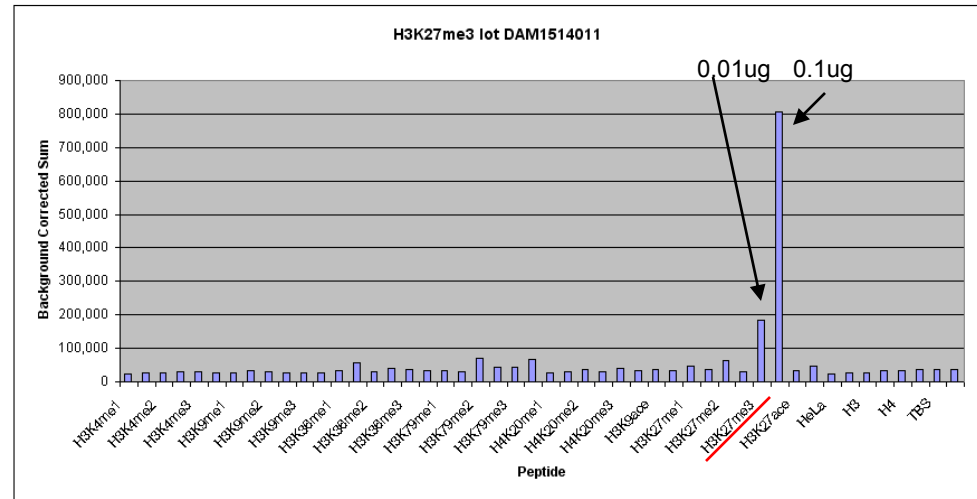
Product Number: 07-449

Lot Number: DAM1514011

• H3K27me3



Gel Setup	1	2	3	4	5	6
A	K4m1 0.01ug	K4m2 0.01ug	K4m3 0.01ug	K9m1 0.01ug	K9m1 0.1ug	Hela 0.01ug
B	K4m1 0.1ug	K4m2 0.1ug	K4m3 0.1ug	K9m2 0.01ug	K9m2 0.1ug	Hela 0.1ug
C	K36m1 0.01ug	K36m2 0.01ug	K36m3 0.01ug	K9m3 0.01ug	K9m3 0.1ug	H3 0.01ug
D	K36m1 0.1ug	K36m2 0.1ug	K36m3 0.1ug	K9ace 0.01ug	K9ace 0.1ug	H3 0.1ug
E	K79m1 0.01ug	K79m2 0.01ug	K79m3 0.01ug	K27m1 0.01ug	K27m1 0.1ug	H4 0.01ug
F	K79m1 0.1ug	K79m2 0.1ug	K79m3 0.1ug	K27m2 0.01ug	K27m2 0.1ug	H4 0.1ug
G	K20m1 0.01ug	K20m2 0.01ug	K20m3 0.01ug	K27m3 0.01ug	K27m3 0.1ug	TBS
H	K20m1 0.1ug	K20m2 0.1ug	K20m3 0.1ug	K27ace 0.01ug	K27ace 0.1ug	TBS



Performed at Broad Institute

Protocol

- Add each peptide into BioDot at above concentrations in 50uL total volume
- Let sit on rocker 60 minutes
- Pull through with vacuum, wash once with 100uL TBS and twice with 200uL TBSTw
- Remove membrane from BioDot and transfer to 10mL Pierce SuperBlock in tray
- Place on rocker for 30 minutes
- Dump off SuperBlock and add Primary Antibody in 10mL total volume
- Place on rocker for 30 minutes
- Wash 3 x 5 minutes in TBSTw
- Add secondary antibody diluted in SuperBlock in 10mL total volume
- Place on rocker for 30 minutes
- Wash 3 x 15 minutes in TBSTw, 1 x 10 minutes in TBS
- Develop in Fluorchem

Test Date 4/12/2010
User MC

Primary Antibody H3K27me3

Vendor Millipore
Part # 07-449
Lot # DAM1514011
Concentration 1 :2500
Incubation Time 30m

Secondary Antibody

Vendor USB #72560
Part # 72560
Lot # 123941
Concentration 1 :10,000
Incubation Time 30m

Develop Time 5m