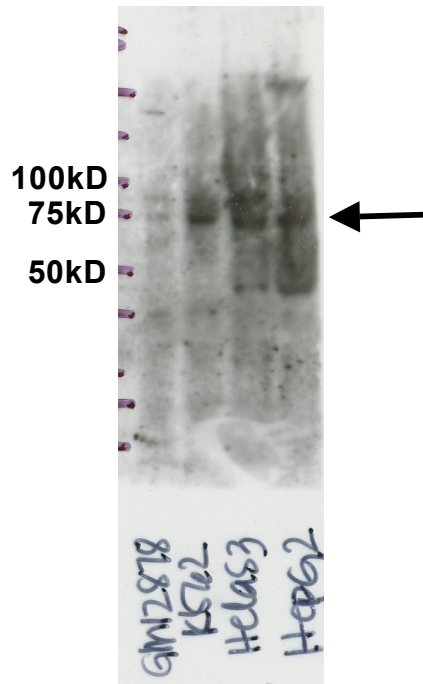


Antibody: GTF2F1/TFIIF Source: Abcam ab28179 (ChIP-Grade)

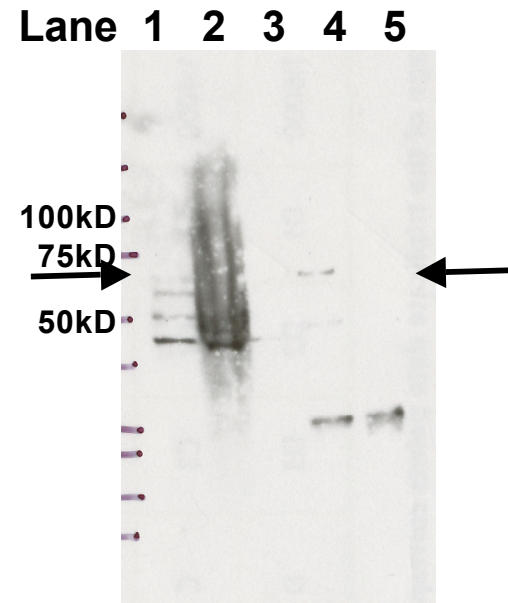
Epitope: Rabbit polyclonal to TFIIF -Recombinant full length protein - RAP 74 subunit

Validation 1: Immunoblotting

Arrow indicates band consistent with expected size (predicted size of 58kD but reported to run at ~74kD) of GTF2F1 in nuclear lysates from (left to right): GM12878, K562, HeLaS3, and HepG2 cell lines.



Arrows indicate immunoprecipitated (IP) band of expected size from HeLaS3 nuclear lysates. Lane 1= HeLaS3 nuclear lysate, Lane2 = HeLaS3 whole cell lysate, Lane 3= flow through and Lane4= bound material from HeLaS3 IP with ab28179, Lane 5= bound material from control IgG IP from HeLaS3.



Validation 2: In Progress