

ENCODE DCC Antibody Validation Document

Date of Submission

Name:

Email:

Lab

Antibody Name:

Target:

Company/
Source:

Catalog Number, database ID, laboratory

Lot Number

Antibody
Description:

Target
Description:

Species Target

Species Host

Validation Method #1

Validation Method #2

Purification
Method

Polyclonal/
Monoclonal

Vendor URL:

Reference (PI/
Publication
Information)

Please complete the following for antibodies to histone modifications:
*if your specifications are not listed in the drop-down box,
please write-in the appropriate information*

Histone Name

AA modified

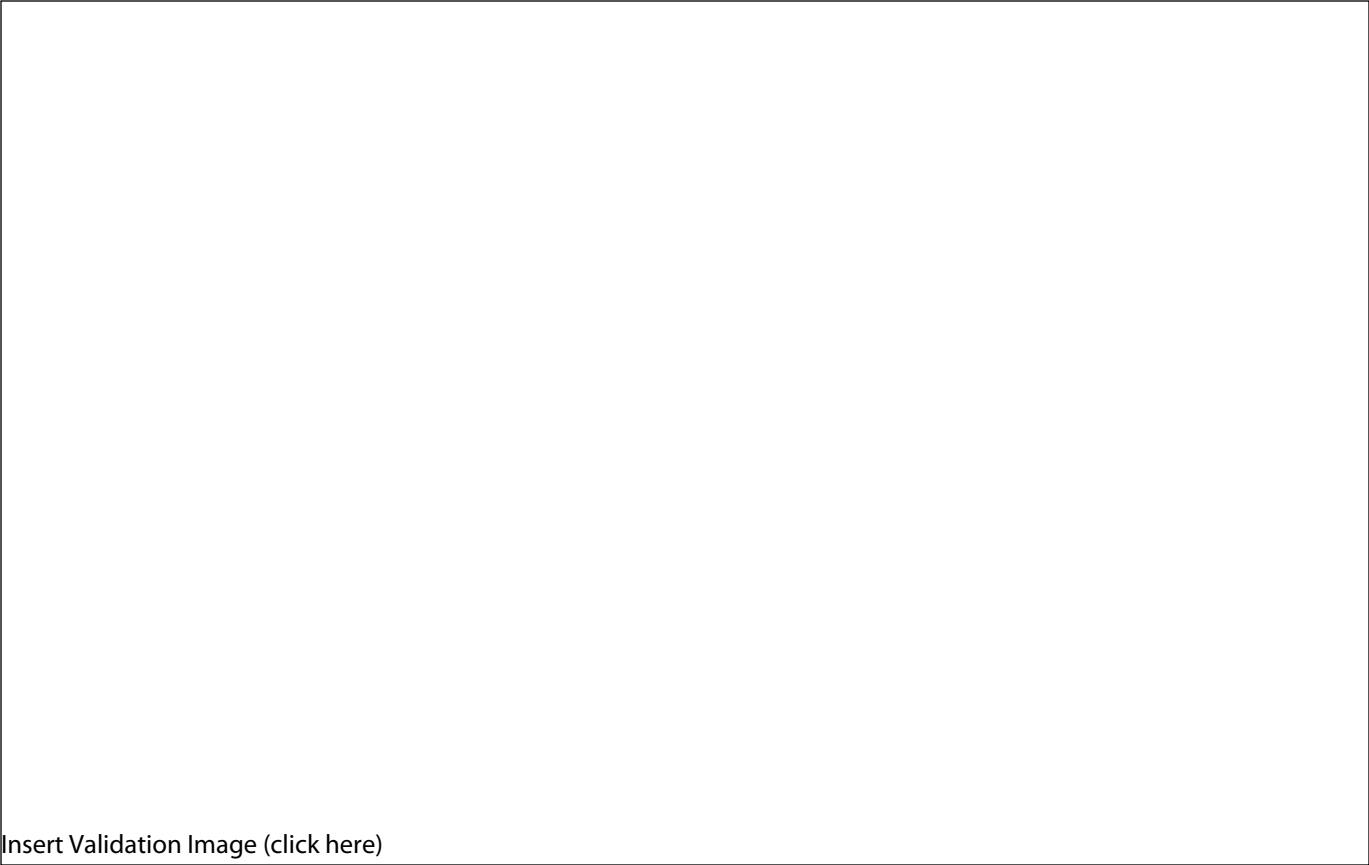
AA Position

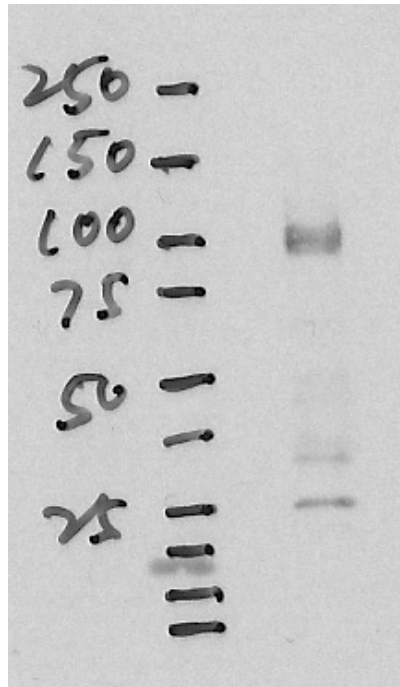
Modification

Validation #1
Analysis



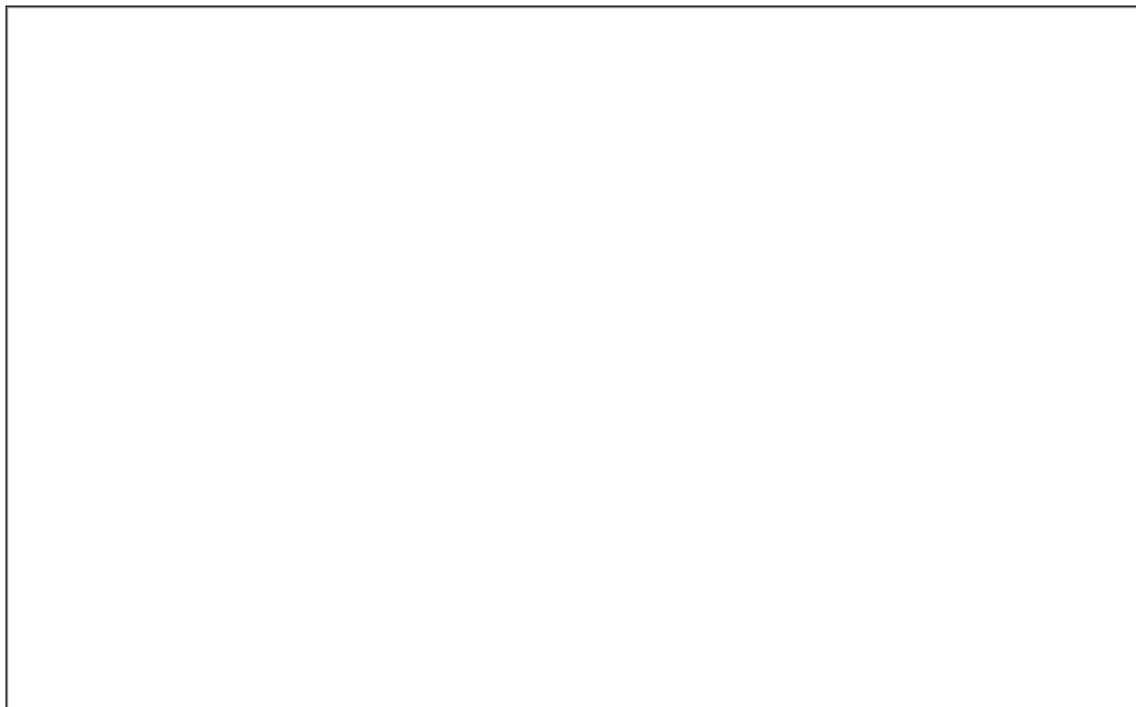
Insert Validation Image (click here)





Western Blot analysis of nuclear extracts from HepG2 using anti GRp20 antibody (sc1002). Expected protein band size 90 KD.

Validation #2
Analysis

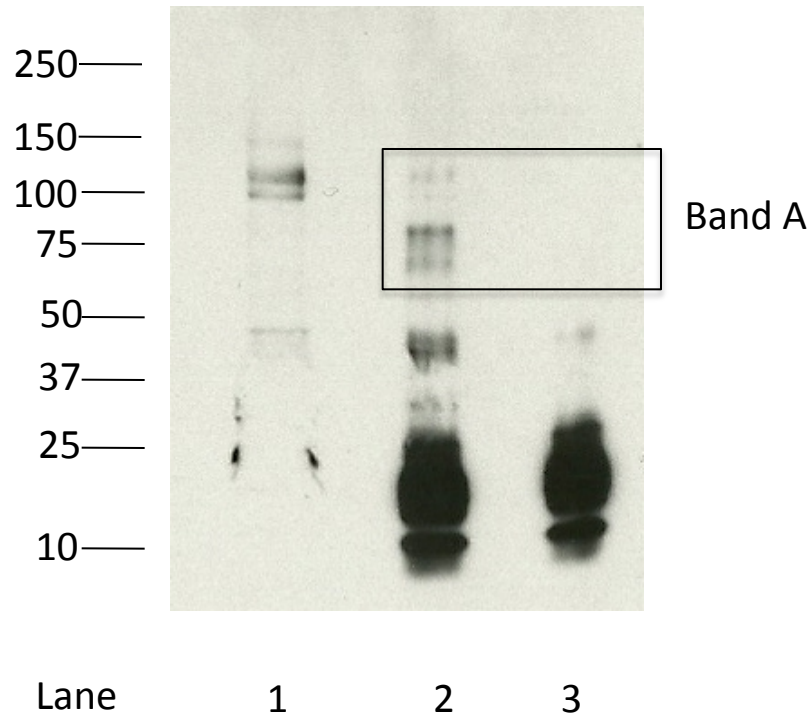


Insert Validation Image (Click here)



Immunoprecipitation assay (IP) + mass spectrometry assay

MW GR(P-20)(sc1002) (R) 90 kD



Lane 1 Input lysate

Lane 2 Bound material from IP

Lane 3 Bound material from IP using non-specific IgG

Spectrum	Name of Protein	Count of Peptides	Ratio (GR/IgG Control)
GR Band A	Isoform Beta of Glucocorticoid receptor	99	NOT IN CONTROL IP
GR Band A	Stress-70 protein, mitochondrial	96	1.103448276
GR Band A	HSPA5 protein	68	1.114754098
GR Band A	Isoform 3 of Ribosome-binding protein 1	61	NOT IN CONTROL IP
GR Band A	Isoform 2 of Ribosome-binding protein 1	57	NOT IN CONTROL IP
GR Band A	Isoform 1 of Heat shock cognate 71 kDa protein	38	1.583333333
GR Band A	Isoform 2 of Pericentriolar material 1 protein	33	NOT IN CONTROL IP
GR Band A	Scaffold attachment factor B1	22	NOT IN CONTROL IP
GR Band A	Putative uncharacterized protein SAFB2	21	NOT IN CONTROL IP
GR Band A	Trifunctional enzyme subunit alpha, mitochondrial	21	NOT IN CONTROL IP
GR Band A	cDNA FLJ58049, highly similar to RNA-binding protein FUS	20	2
GR Band A	Isoform 3 of Probable ATP-dependent RNA helicase DDX17	15	1.875
GR Band A	Calcium-binding mitochondrial carrier protein Aralar2	14	1.272727273
GR Band A	HNRPU protein	13	3.25
GR Band A	Isoform 1 of Phosphoenolpyruvate carboxykinase [GTP], mitochondrial	13	2.6
GR Band A	ATP-dependent RNA helicase DDX3Y	12	NOT IN CONTROL IP
GR Band A	Isoform 2 of Cell cycle progression protein 1	12	NOT IN CONTROL IP
GR Band A	Isoform 2 of Heterogeneous nuclear ribonucleoprotein M	12	1.5
GR Band A	Heat shock protein HSP 90-beta	11	11
GR Band A	NOP56 protein (Fragment)	11	NOT IN CONTROL IP
GR Band A	Isoform 2 of Protein LAS1 homolog	10	NOT IN CONTROL IP
GR Band A	Isoform 2 of Zinc finger MYM-type protein 3	10	NOT IN CONTROL IP
GR Band A	Rhabdomyosarcoma antigen MU-RMS-40.12	10	NOT IN CONTROL IP
GR Band A	Heat shock protein 75 kDa, mitochondrial	9	NOT IN CONTROL IP
GR Band A	LMNB1 protein	9	NOT IN CONTROL IP
GR Band A	Long-chain-fatty-acid--CoA ligase 3	9	1.125
GR Band A	Zinc finger BED domain-containing protein 1	9	NOT IN CONTROL IP
GR Band A	Isoform 1 of RNA-binding protein 14	8	NOT IN CONTROL IP
GR Band A	Isoform Short of Delta-1-pyrroline-5-carboxylate synthase	8	NOT IN CONTROL IP
GR Band A	Complement protein C4B frameshift mutant (Fragment)	7	NOT IN CONTROL IP
GR Band A	Endoplasmic	6	NOT IN CONTROL IP
GR Band A	protein transport protein Sec16A	5	NOT IN CONTROL IP
GR Band A	Isoform 2 of Serum albumin	3	NOT IN CONTROL IP
GR Band A	Isoform 5 of Interleukin enhancer-binding factor 3	3	NOT IN CONTROL IP
GR Band A	Nuclear receptor coactivator 5	2	NOT IN CONTROL IP
GR Band A	oxoglutarate dehydrogenase isoform 3 precursor	2	NOT IN CONTROL IP
GR Band A	Isoform 2 of Telomere-associated protein RIF1	1	NOT IN CONTROL IP
GR Band A	PDZ and LIM domain protein 1	1	NOT IN CONTROL IP